

THIS PAGE IS UNCLASSIFIED

THIS PAGE IS UNCLASSIFIED

PROJECT 10073 RECORD CARD

1. DATE 2 Oct 1951	LOCATION White Sands, N.M.	2. CONCLUSIONS <input type="checkbox"/> Was Balloon <input type="checkbox"/> Probably Balloon <input type="checkbox"/> Possibly Balloon <input type="checkbox"/> Was Aircraft <input type="checkbox"/> Probably Aircraft <input type="checkbox"/> Possibly Aircraft <input checked="" type="checkbox"/> Was Astronomical Meteor <input type="checkbox"/> Probably Astronomical <input type="checkbox"/> Possibly Astronomical <input type="checkbox"/> Other <input type="checkbox"/> Insufficient Data for Evaluation <input type="checkbox"/> Unknown
3. DATE-TIME GROUP Local 2120 GMT 03/0420Z	4. TYPE OF OBSERVATION <input checked="" type="checkbox"/> Ground-Visual <input type="checkbox"/> Air-Visual <input type="checkbox"/> Ground-Radar <input type="checkbox"/> Air-Intercept Radar	
5. PHOTOS <input type="checkbox"/> Yes <input checked="" type="checkbox"/> No	6. SOURCE Military and Civilian	
7. LENGTH OF OBSERVATION 2 Seconds	8. NUMBER OF OBJECTS 1	9. COURSE Down at 45 deg angle
10. BRIEF SUMMARY OF SIGHTING Color: Forward, Red; trailing, orange blue. Shape oblong, tapering. Size 3-4 ft. Speed of jet a/c. No sound. It faded away.		11. COMMENTS Evaluated as Meteor

THIS PAGE IS UNCLASSIFIED

From the AboveTopSecret.com Clifford Stone Document Archive
Commercial use is forbidden. Visit stone.abovetopsecret.com for more information on usage.

From the AboveTopSecret.com Clifford Stone Document Archive
Commercial use is forbidden. Visit stone.abovetopsecret.com for more information on usage.

THIS PAGE IS UNCLASSIFIED

THIS PAGE IS UNCLASSIFIED

HEADQUARTERS FOURTH ARMY

FORT SAM HOUSTON, TEXAS

Office of the AG of S, G-2

15 October 1951

SUBJECT: Unidentified Aerial Phenomena

Commanding General
Air Materiel Command
Wright-Patterson Air Force Base
Dayton, Ohio
ATTENTION: AGIS

Included for your information and action deemed advisable are
Guides to Investigation concerning observation of unidentified aerial
phenomena of 2 October 1951, by the following listed individuals:

Friquet M. Cedillo, Box 10, La Mesa, New Mexico

Clarence J. Chambers, Room 13, Building T-1668, White Sands
Proving Ground, Las Cruces, New Mexico

Cpl Dolan E. McIntyre, RA 18340929, 4119th ASU, White Sands
Proving Ground, Las Cruces, New Mexico

Cpl Charles E. Pating, RA 15409239, 4119th ASU, White Sands
Proving Ground, Las Cruces, New Mexico

Jose M. Mendez, Box 11, La Mesa, New Mexico

5 Incls
Re: Report to Trues
(in dup)

GEORGE A. A. JONES
Colonel, GS
AG of S, G-2

Copy furnished:
CG, Continental Air Command

DOWNGRADED AT 3 YEAR INTERVALS
DECLASSIFIED AFTER 120 YEARS.
DOD DR 6200.10

UNCLASSIFIED

7-3712-39

From the AboveTopSecret.com Clifford Stone Document Archive
Commercial use is forbidden. Visit stone.abovetopsecret.com for more information on usage.

From the AboveTopSecret.com Clifford Stone Document Archive
Commercial use is forbidden. Visit stone.abovetopsecret.com for more information on usage.

THIS PAGE IS UNCLASSIFIED

THIS PAGE IS UNCLASSIFIED

THIS PAGE IS UNCLASSIFIED

~~RESTRICTED~~
GUIDE TO INVESTIGATION

UNCLASSIFIED

UNIDENTIFIED AERIAL OBJECT ~~DOWNGRADED AT 8 YEAR INTERVALS;
DECLASSIFIED AFTER 12 YEARS.~~
DOD DIR 5200.10

Incident No. _____

1. Date of observation 2 Oct 51 Date of Interview 3 Oct 51
2. Exact time of observation (local) 2120 hours.
3. Place of observation: 0350.9-3580.42 Ten thousand Meter Universal Mercator Grid (Map Coordinates) Zone 13, the last three digits of grid numbers omitted.
4. Position of observer (air, car, bldg, location or - give details):
Main gate, MSPG, standing up.
5. What attracted attention to object: Informed by Military Police that strange objects reported seen and was watching for them.
6. Number of objects and sketch of formation or grouping: One (1)
7. Apparent size (compare to known object, i.e., sun, moon, thumb or fist at arms length): Estimated three (3) or four (4) feet.
8. Color of object: Forward end was red, and trailing end was orange blue.
9. Shape (give graphic description - compare with known object): Oblong, forward or protruding end small and the trailing end large.
10. Altitude (Angle of elevation above horizon - 0° at horizon, 90° overhead):
Forty-five (45) degrees from horizontal.
11. Direction from observer (Angle clockwise from north): Ninety (90) degrees.
12. Distance from observer (distance to town, bldg, etc., over which object appeared to be): Estimated over Army blockhouse (BH), five or six miles.
13. Direction of flight of object (s): Falling at slight angle, of 45 degrees.
14. Time in sight: Two (2) seconds.
15. Speed (time to cover given angular distance): Speed of jet plane.
16. Sound and odor: none
17. Trail (color, length, width, persistence, etc.) Particles behind and trail of light.
18. Luminosity (visible by reflection, incandescence, other - degree of brilliance): None
19. Projections (fins, wings, rods, antennae, canopies, etc.): None
20. Manuevers (turns, climbs, dives, etc - sketch of flight path): None

~~RESTRICTED~~
UNCLASSIFIED

THIS PAGE IS UNCLASSIFIED

From the AboveTopSecret.com Clifford Stone Document Archive
Commercial use is forbidden. Visit stone.abovetopsecret.com for more information on usage.

From the AboveTopSecret.com Clifford Stone Document Archive
Commercial use is forbidden. Visit stone.abovetopsecret.com for more information on usage.

THIS PAGE IS UNCLASSIFIED

THIS PAGE IS UNCLASSIFIED

~~RESTRICTED~~
UNCLASSIFIED

GUIDE TO INVESTIGATION (Cont'd)

Incident No. _____

21. Manner of disappearance: Fade away

22. Effect on clouds: There were no clouds, sky clear.

23. Additional information concerning object: None

24. Weather conditions and light at time of sighting: Wind blowing, and clear night

25. Name and address of observer: Erique M. Cedillo, Box 10, La Mesa, New Mexico.

Occupation and hobbies: _____

Comments of interrogator relative to intelligence and character of
observer (check neighbors, police dept, FBI records, employer, etc.)

Did observer wear glasses, especially polaroid glasses at time of sighting, or was object viewed through canopy, window, or other transparent material? Does not wear glasses.

THIS PAGE IS UNCLASSIFIED

THIS PAGE IS UNCLASSIFIED

UNCLASSIFIED

GUIDE TO INVESTIGATION

UNIDENTIFIED AERIAL OBJECTS ~~CONFIDENTIAL~~ DOWNGRADED AT 3 YEAR INTERVALS;
DECLASSIFIED AFTER 12 YEARS.
DOD DIR 5200.10

Incident No. _____

1. Date of observation 2 Oct 51 Date of Interview 3 Oct 51
2. Exact time of observation (local) 2120 hours.
3. Place of observation: 0350.9-3580.42 Ten thousand Meter Universal Mercator Grid
(Map Coordinates) Zone 13, the last three digits of the grid numbers omitted.
4. Position of observer (air, car, bldg, location or - give details):
Standing up outside the Main Gate hut.
5. What attracted attention to object: Informed by Military Police that strange
objects reported in sky. Was watching for them when object appeared.
6. Number of objects and sketch of formation or grouping: One (1)
7. Apparent size (compare to known object, i.e., sun, moon, thumb or fist
at arms length): Estimated three (3) feet
8. Color of object: Forward point red, and trailing end was light green.
9. Shape (give graphic description - compare with known object): Round, for-
ward end large and the trailing end tapered and smaller.
10. Altitude (Angle of elevation above horizon - 0° at horizon, 90° overhead):
25 degrees, from horizontal to level of ground.
11. Direction from observer (Angle clockwise from north): 90 degrees (Toward Army
Blockhouse (BH))
12. Distance from observer (distance to town, bldg, etc., over which object
appeared to be): Over Army BH, about five or six miles.
13. Direction of flight of object (s): Traveling down at 20 degrees from normal,
from right to left.
14. Time in sight: One (1) second
15. Speed (time to cover given angular distance): Estimated faster than a jet.
16. Sound and odor: None
17. Trail (color, length, width, persistence, etc.) None observed.
18. Luminosity (visible by reflection, incandescence, other - degree of
brilliance): None
19. Projections (fins, wings, rods, antennae, canopies, etc.): None
20. Manuevers (turns, climbs, dives, etc. - sketch of flight path): None

~~CONFIDENTIAL~~ UNCLASSIFIED

THIS PAGE IS UNCLASSIFIED

THIS PAGE IS UNCLASSIFIED

THIS PAGE IS UNCLASSIFIED

UNCLASSIFIED

~~RESTRICTED~~

GUIDE TO INVESTIGATION (Cont'd)

Incident No. _____

- 21. Manner of disappearance: Fade away
- 22. Effect on clouds: Sky was clear and no clouds.
- 23. Additional information concerning object: Observer stated that it could have been a falling star.
- 24. Weather conditions and light at time of sighting: Wind was blowing, sky clear, very clear night.
- 25. Name and address of observer: Jose M. Ramirez, Box 11, La Mesa, New Mexico
 Occupation and hobbies: Security Guard, Civil Service, WSPG, and no hobbies.
 Comments of interrogator relative to intelligence and character of observer (check neighbors, police dept, FBI records, employer, etc.)

Did observer wear glasses, especially polaroid glasses at time of sighting, or was object viewed through canopy, window, or other transparent material? Observer does not wear glasses.

2
DOWNGRADED AT 3 YEAR INTERVALS;
DECLASSIFIED AFTER 12 YEARS.
DOD DIR 5200.10

UNCLASSIFIED

~~RESTRICTED~~

THIS PAGE IS UNCLASSIFIED

From the AboveTopSecret.com Clifford Stone Document Archive
Commercial use is forbidden. Visit stone.abovetopsecret.com for more information on usage.

From the AboveTopSecret.com Clifford Stone Document Archive
Commercial use is forbidden. Visit stone.abovetopsecret.com for more information on usage.

THIS PAGE IS UNCLASSIFIED

THIS PAGE IS UNCLASSIFIED

330°



UNCLASSIFIED

From the AboveTopSecret.com Clifford Stone Document Archive
Commercial use is forbidden. Visit stone.abovetopsecret.com for more information on usage.

From the AboveTopSecret.com Clifford Stone Document Archive
Commercial use is forbidden. Visit stone.abovetopsecret.com for more information on usage.

THIS PAGE IS UNCLASSIFIED

THIS PAGE IS UNCLASSIFIED

UNCLASSIFIED



240
230
220
210
200
190
180
170
160

30°

From the AboveTopSecret.com Clifford Stone Document Archive
Commercial use is forbidden. Visit stone.abovetopsecret.com for more information on usage.

From the AboveTopSecret.com Clifford Stone Document Archive
Commercial use is forbidden. Visit stone.abovetopsecret.com for more information on usage.

T
H
I
S

THIS PAGE IS UNCLASSIFIED

THIS PAGE IS UNCLASSIFIED

30°



The drawing shows a curved line starting from the left edge, dipping down, and then rising towards the right. A dashed line follows a similar path below it. A solid line segment is drawn at a 30-degree angle to the horizontal, indicated by an arrow and the text '30°'. To the right of this line is a hand-drawn oval shape.

THIS

From the AboveTopSecret.com Clifford Stone Document Archive
Commercial use is forbidden. Visit stone.abovetopsecret.com for more information on usage.

From the AboveTopSecret.com Clifford Stone Document Archive
Commercial use is forbidden. Visit stone.abovetopsecret.com for more information on usage.

THIS PAGE IS UNCLASSIFIED

THIS PAGE IS UNCLASSIFIED

300°

240 230 220 210 200 190 180 170 160 150 140 130 120 110 100 90 80 70 60 50 40 30 20 10

10
20
30
40
50

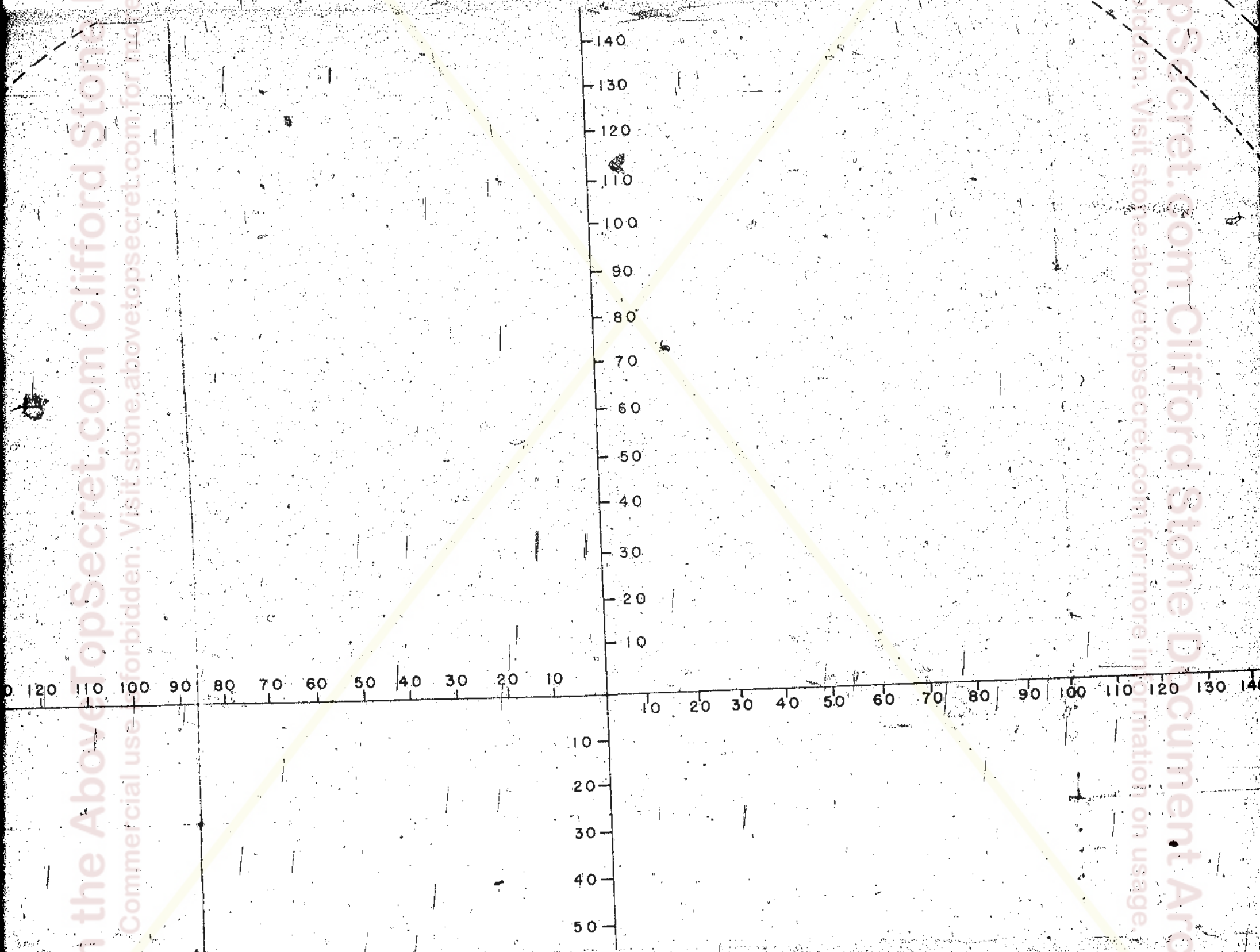
T
H
I
S

From the AboveTopSecret.com Clifford Stone Document Archive
Commercial use is forbidden. Visit stone.aboveopsecret.com for more information on usage.

From the AboveTopSecret.com Clifford Stone Document Archive
Commercial use is forbidden. Visit stone.aboveopsecret.com for more information on usage.

THIS PAGE IS UNCLASSIFIED

THIS PAGE IS UNCLASSIFIED

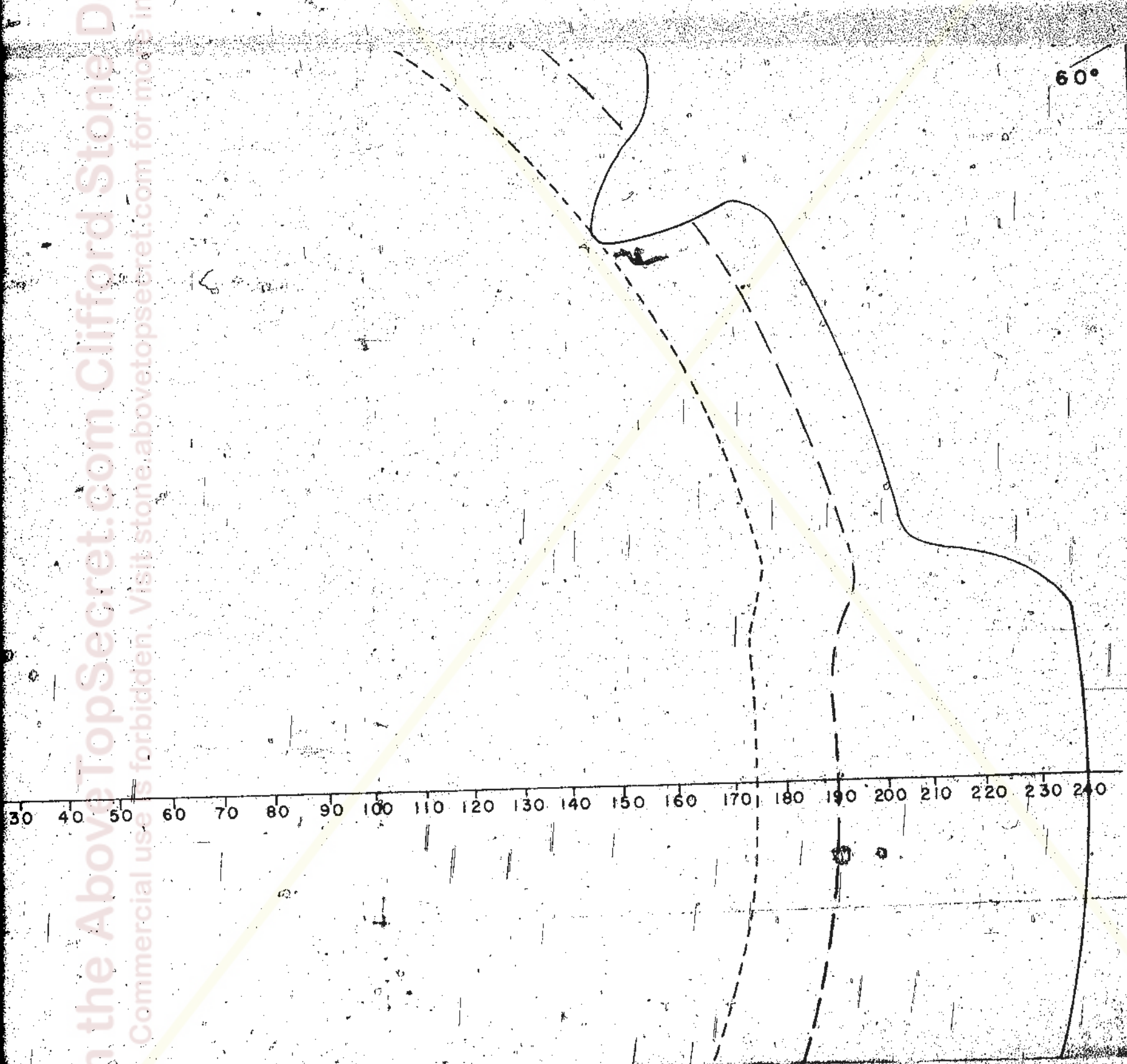


From the AboveTopSecret.com Clifford Stone Document Archive
Commercial use forbidden. Visit stone.abovetopsecret.com for more information on usage.

From the AboveTopSecret.com Clifford Stone Document Archive
Commercial use forbidden. Visit stone.abovetopsecret.com for more information on usage.

THIS PAGE IS UNCLASSIFIED

THIS PAGE IS UNCLASSIFIED



THIS PAGE IS UNCLASSIFIED

From the AboveTopSecret.com Clifford Stone Document Archive
Commercial use is forbidden. Visit stone.abovetopsecret.com for more information on usage.

From the AboveTopSecret.com Clifford Stone Document Archive

From the AboveTopSecret.com Clifford Stone Document Archive

THIS PAGE IS UNCLASSIFIED

THIS PAGE IS UNCLASSIFIED

From the AboveTopSecret.com Clifford Stone Document Archive
Commercial use is forbidden. Visit stone.abovetopsecret.com for more information on usage.

From the AboveTopSecret.com Clifford Stone Document Archive
Commercial use is forbidden. Visit stone.abovetopsecret.com for more information on usage.

240°

210°

MAXIMUM SEARCH RANGE (CPS-1) - 30,000 FEET
LESS THAN 33% PICKUP (CPS-1)

THIS
60
70
80
90
100
110
120
130
140
150
160
170
180
190
200
210
220
230
240
250

HORIZONTAL COVER

THIS PAGE IS UNCLASSIFIED

THIS PAGE IS UNCLASSIFIED

60
70
80
90
100
110
120
130
140
150
160
170
180
190
200
210
220
230
240
250

THIS

150°

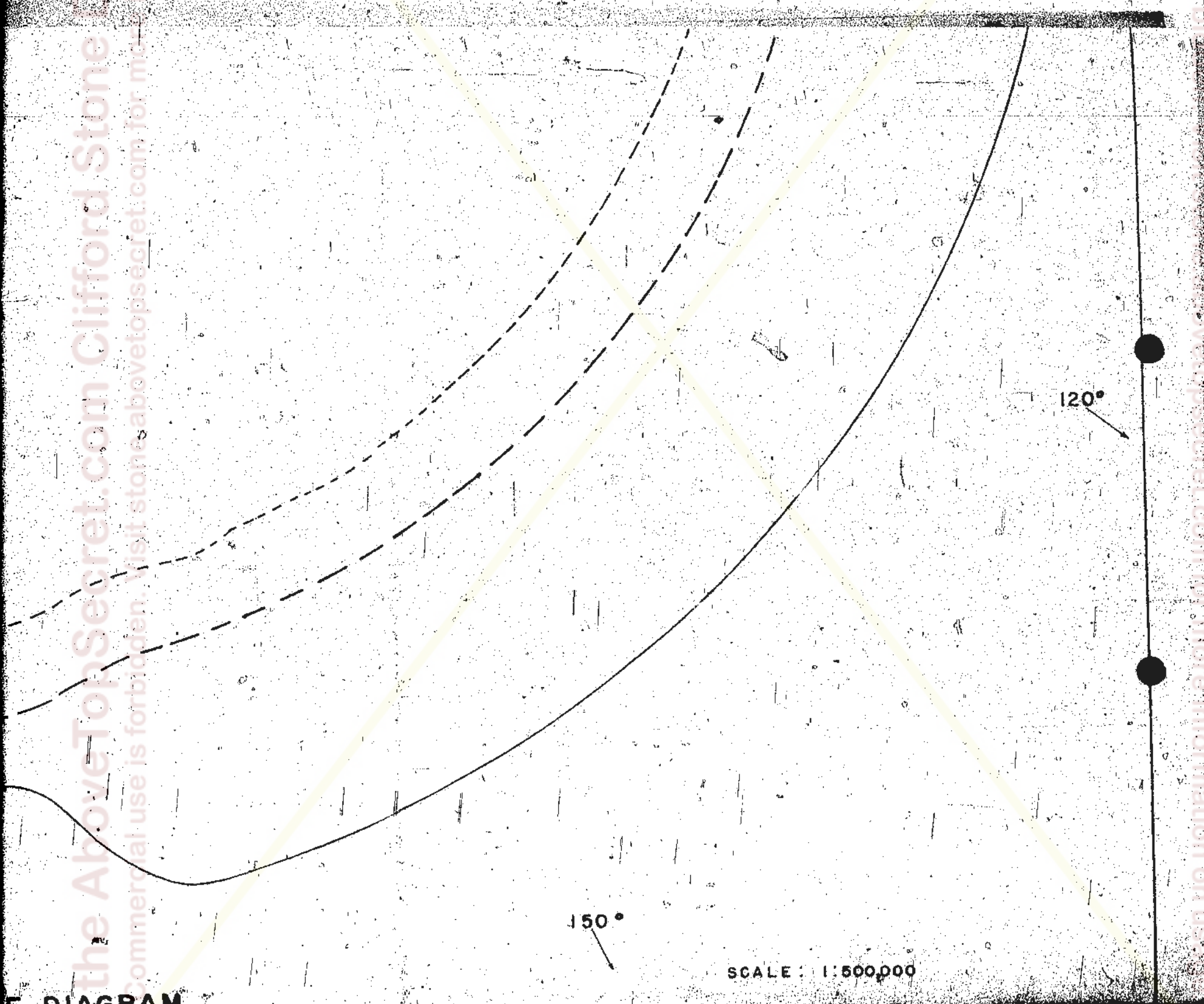
HORIZONTAL COVERAGE DIAGRAM

From the AboveTopSecret.com Clifford Stone Document Archive
Commercial use is forbidden. Visit stone.abovetopsecret.com for more information on usage.

From the AboveTopSecret.com Clifford Stone Document Archive
Commercial use is forbidden. Visit stone.abovetopsecret.com for more information on usage.

THIS PAGE IS UNCLASSIFIED

THIS PAGE IS UNCLASSIFIED



E DIAGRAM

THIS PAGE IS UNCLASSIFIED

From the AboveTopSecret.com Clifford Stone Document Archive
Commercial use is forbidden. Visit stones.abovetopsecret.com for more information on usage.

Commercial use is forbidden. Visit stones.abovetopsecret.com for more information on usage.

From the AboveTopSecret.com Clifford Stone Document Archive

THIS PAGE IS UNCLASSIFIED

THIS PAGE IS UNCLASSIFIED

LESS THAN 66% PICKUP (UPS-1)

INCLOSURE #6

USAF 112 * 1R-25-52


THIS

From the AboveTopSecret.com Clifford Stone Document Archive
Commercial use is forbidden. Visit stone.abovetopsecret.com for more information on usage.

From the AboveTopSecret.com Clifford Stone Document Archive
Commercial use is forbidden. Visit stone.abovetopsecret.com for more information on usage.

THIS PAGE IS UNCLASSIFIED

THIS PAGE IS UNCLASSIFIED

 UNCLASSIFIED

Commercial use is forbidden. Visit stone.abovetopsecret.com for more information on usage.

THIS

From the AboveTopSecret.com Clifford Stone Document Archive

From the AboveTopSecret.com Clifford Stone Document Archive

THIS PAGE IS UNCLASSIFIED

THIS PAGE IS UNCLASSIFIED

UNCLASSIFIED

THIS PAGE IS UNCLASSIFIED

From the AboveTopSecret.com Clifford Store Document Archive
Commercial use is forbidden. Visit stone.abovetopsecret.com for more information on usage.

From the AboveTopSecret.com Clifford Store Document Archive
Commercial use is forbidden. Visit stone.abovetopsecret.com for more information on usage.

THIS PAGE IS UNCLASSIFIED



From the AboveTopSecret.com Clifford Stone Document Archive

Commercial use is forbidden. Visit stone above top secret com

Commercial use is forbidden. Visit stone above top secret com for more information on usage.

From the AboveTopSecret.com Clifford Stone Document Archive

THIS PAGE IS UNCLASSIFIED